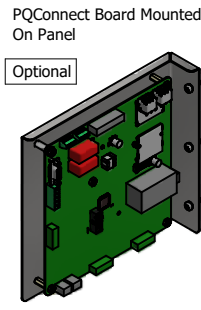
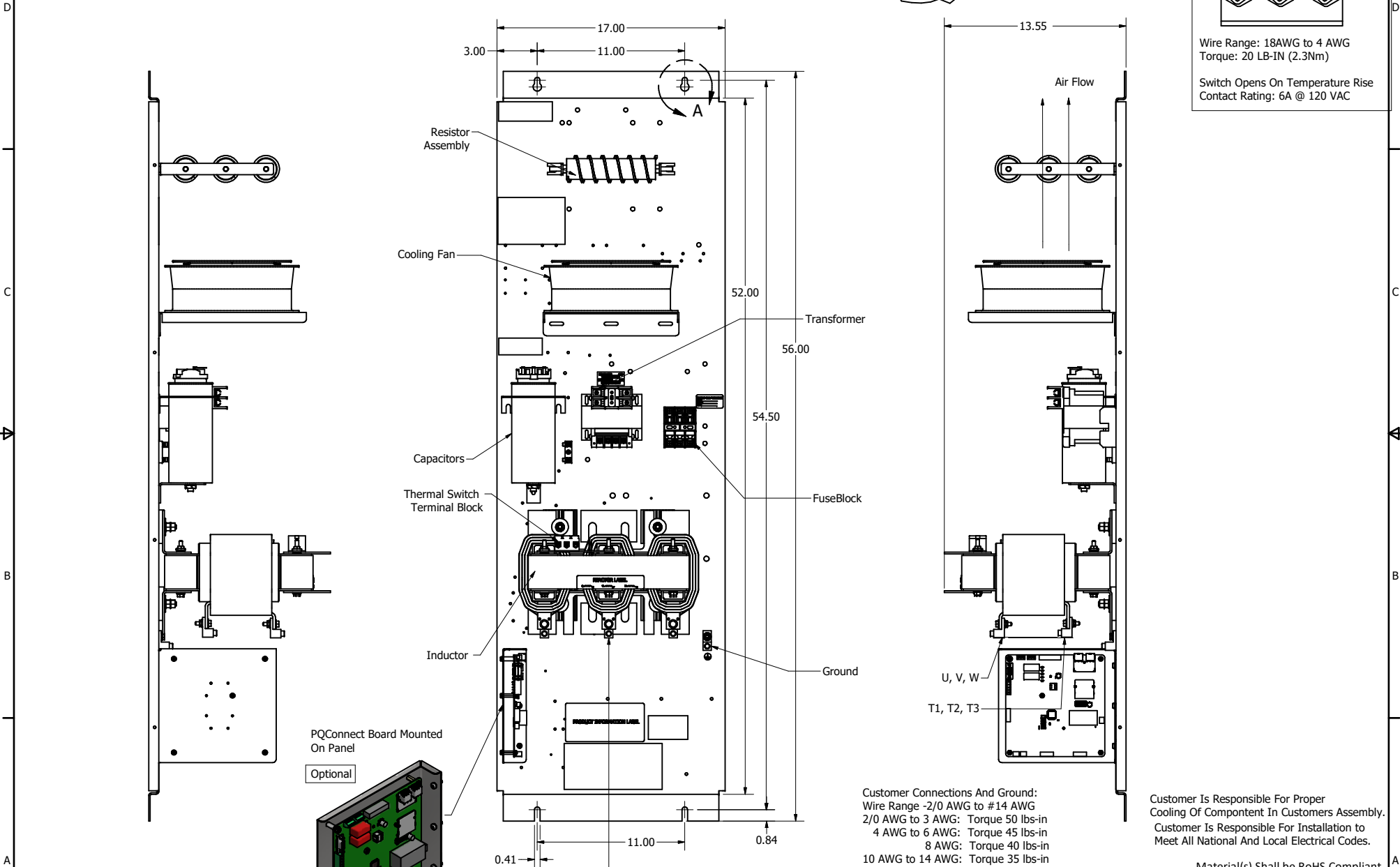
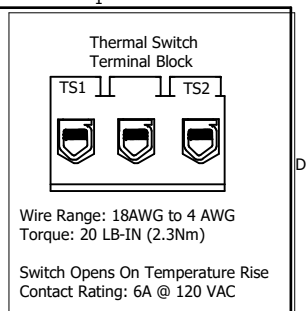
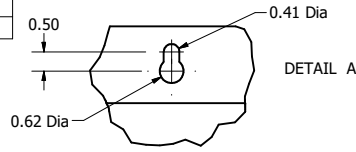


SineWave Part Number	Schematic Drawing #	Approx Weight (LBS)
KMG110C00A	24281-23A	225
KMG110C00P	24281-23P	230

HorsePower (HP)	kVar	Max Amps	Voltage (V)	Phase
100	10	110	600	3



TCI, LLC CLAIMS PROPRIETARY RIGHTS IN THE MATERIAL HEREIN DISCLOSED. IT IS SUPPLIED WITHOUT PREJUDICE TO ANY PATENT RIGHTS OF TCI AND MAY NOT BE REPRODUCED OR USED TO MANUFACTURE ANYTHING SHOWN THEREIN WITHOUT WRITTEN PERMISSION FROM TCI.				TOLERANCES (EXCEPT AS NOTED)		W132 N10611 Grant Drive Germantown, WI 53022	
				DECIMAL		.XX ± .25 .XXX ± .10	
				FRACTIONAL		± 1/16	
				ANGULAR		± 1°	
D	Add PQConnect	6/30/2020	DSW	DRN BY	DATE	10/12/2016	104424DG
C	Drawing updated to Inventor	3/20/2020	DSW	DATE	DRN BY		
NO	REVISION	DATE	BY	SCALE	1/5	DRN BY	FILE
							SHT 1 OF 1

Material(s) Shall be RoHS Compliant

KMG110C00, SineWave Filter  
Open Panel, 100HP, 600V